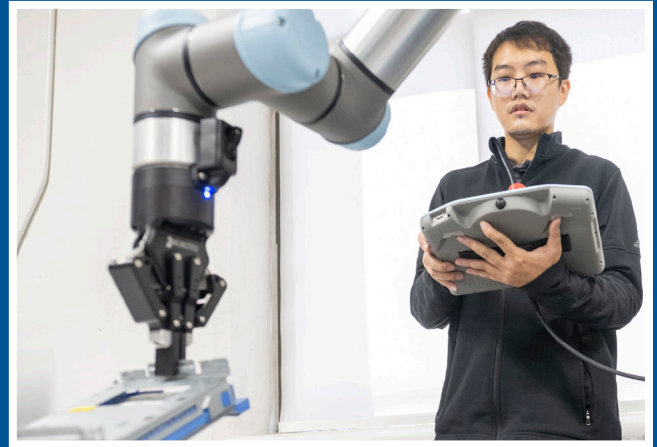


COMBINED DEGREE PROGRAM

DEPARTMENT OF INDUSTRIAL & SYSTEMS ENGINEERING
UNIVERSITY OF FLORIDA



   **UFISE**  **UF_ISE**
ISE.UFL.EDU

As an undergraduate student at the University of Florida, you can participate in a combined degree program, allowing you to graduate with **both a B.S. and a M.S. or M.E. degree** in Industrial & Systems Engineering.

After completing all of your ISE Critical Tracking courses, you can meet with your ISE advisor to discuss whether you are eligible for this program and identify which graduate courses you wish to substitute for undergraduate program courses. Please see your ISE advisor or email undergradadvising@ise.ufl.edu for more information.

By participating in this program and taking up to 12 graduate credits early, students are able to earn a Master's degree from UF ISE in as few as two additional semesters.

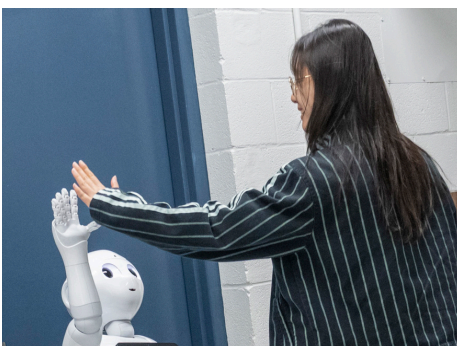
GRADUATE COURSES THAT CAN BE SUBSTITUTED FOR THE UNDERGRADUATE CURRICULUM

Graduate Courses

EIN6905: Data Analytics
EIN6422: Manufacturing Management
EIN6216: Occupational Safety
ESI6529: Digital Simulation Techniques
ESI6323: Models for Supply Chain Management

Undergraduate Courses

ESI4610: Data Analytics I
EIN4451: Lean Production Systems
EIN4210: Occupational Safety Engineering
ESI4523: Industrial Systems Simulation
EIN4343: Inventory and Supply Chain Systems



AVERAGE STARTING SALARY
\$82,000



UF GRADUATES WITH A MASTER'S DEGREE IN INDUSTRIAL & SYSTEMS ENGINEERING GO ON TO WORK FOR COMPANIES SUCH AS **IBM, SPRINT, CARNIVAL CRUISE LINES, FEDEX EXPRESS, GE, SIEMENS, EXPEDIA GROUP, AND MANY MORE!**